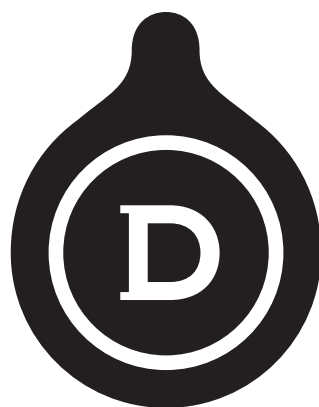


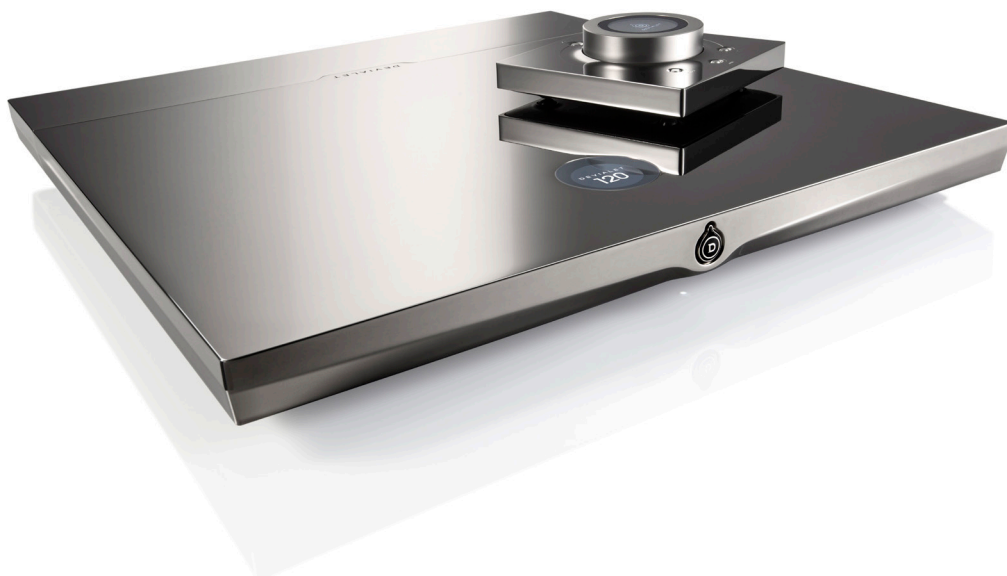
DEVIALET
120 200 400 800



120

TECHNOLOGY

- | Patented ADH® (Analog Digital Hybrid) amplification core
- | Switched-mode power supply 600W continuous, 3000W peak power
- | Digital Signal Processor 400 MHz 4 canals 192kHz / 40bits floating-point
- | Analog/Digital Converter for analog inputs, T.I. PCM4202 component, 192kHz / 24bits
- | Patented Digital/Analog Converter « Magic Wire », T.I. PCM1792 component, 192kHz / 24bits
- | 3-bands equalizer (cut-off frequency)
- | Volume Control
- | Oversampling of all inputs in to 192kHz / 24bits
- | Universal streamer Devialet AIR (Asynchronous Intelligent Route), compatible with any PCM format up to 192kHz / 24bits
- | Horloge unique haute précision, faible gigue
- | Patented ultra-linear Class A amplifier



120

INPUTS / OUTPUTS

Wifi board 802.11 b/g/n 2,4GHz for universal streamer Devialet AIR

RJ45 input 10/100 Mbps for universal streamer Devialet AIR

Asynchronous USB input, XMOS component

2 optical inputs (TOS and TOS mini 3,5mm)

RCA Connectors 1 & 2

| 2 digital coaxial inputs S/PDIF

RCA Connectors 3 & 4 (selectable through the configurator)

| *Entrée analogique niveau ligne*

Nominal level from 0,2VRMS to 4VRMS

Sampling rate 96kHz or 192kHz

Or | *Analog phono input*

Cartridge type: MM / MC

Canal choice: stereo / mono

Sensitivity with MM cartridge from 1mVRMS to 15mVRMS

Sensitivity with MC cartridge from 100 μ VRMS to 5000 μ VRMS

RIAA equalization curve: 1953, 1976 or other on demand

Sampling rate 96kHz or 192kHz

Or | 2 digital coaxial inputs S/PDIF

RS232 protocol (commands documentation available through the configurator)

Trigger in/out

Speakers output (banana plugs 4mm or spades)

Maximum output 2x120W under 6 Ω

Adjustable from 30W to 120W through the configurator

Compatible with any speakers from 2 Ω to 8 Ω



120

MEASURED PERFORMANCES

THD+N (Tonal/Harmonic Distortion) at full power: 0,001%

IMD (Intermodulation Distortion) SMTPE: 0,001%

SNR (Signal-to-Noise Ratio): 130dB unweighted

Thermal distortion: not measurable

Output impedance: <0,001Ω

Bandwidth through digital inputs at 2Ω to 8Ω load: DC–87kHz (-3dB),
DC–60kHz (-1dB), DC–30kHz (-0,1dB), same on analog inputs except 0,1Hz instead of DC

OTHER CHARACTERISTICS

Chrome-plated Aluminium chassis, milled from a single block

| *Black Chrome finish*

| *Dimensions: 383mm x 383mm x 40mm (W, D, H)*

| *Weight: 5.65Kg*

Omnidirectional Radio-Frequency remote control

| *Aluminium casing milled from a single block*

| *Black Chrome finish*

| *3 x AAA LR03 1,5V batteries*

| *Battery lifespan under normal usage: 2 years*

Universal power supply 110-120V / 220-240V - 50/60Hz

| *Auto-calibration*

| *Country-specific power cord included*

Devialet AIR software included, free iOS and Android apps

Optional Wall-mount frame

2 years warranty (3 more years of warranty from the online registering of the Devialet)!

200

TECHNOLOGY

- | Patented ADH® (Analog Digital Hybrid) amplification core
- | Switched-mode power supply 600W continuous, 3000W peak power
- | Digital Signal Processor 400 MHz 4 canals 192kHz / 40bits floating-point
- | Analog/Digital Converter for analog inputs, T.I. PCM4202 component, 192kHz / 24bits
- | Patented Digital/Analog Converter « Magic Wire », T.I. PCM1792 component, 192kHz / 24bits
- | 3-bands equalizer (cut-off frequency)
- | Volume Control
- | Oversampling of all inputs in to 192kHz / 24bits
- | Universal streamer Devialet AIR (Asynchronous Intelligent Route), compatible with any PCM format up to 192kHz / 24bits
- | Horloge unique haute précision, faible gigue
- | Patented ultra-linear Class A amplifier



200

INPUTS / OUTPUTS

Wifi board 802.11 b/g/n 2,4GHz for universal streamer Devialet AIR

Ethernet RJ45 input 10/100 Mbps for universal streamer Devialet AIR

Asynchronous USB input, XMOS component

2 optical inputs (TOS and TOS mini 3,5mm)

RCA Connector 1 (selectable through the configurator)

| *Digital coaxial input S/PDIF*

Or | *Digital coaxial output S/PDIF*

Sampling rate 48kHz, 96kHz or 192kHz

Fixed or variable volume

Or | *Analog line level stereo output (with RCA connector 2)*

Nominal level from 0,2VRMS to 4VRMS

Active filtering (low-pass, high-pass or other on demand)

Cut-off frequencies from 10Hz to 10kHz

Filter slope from -6dB/octave to -24dB/octave

Fixed or variable volume

RCA Connector 2 (selectable through the configurator)

| *Digital coaxial inputs S/PDIF*

Or | *Analog line level mono output*

Nominal level from 0,2VRMS to 4VRMS

Active filtering (low-pass, high-pass or other on demand)

Cut-off frequencies from 10Hz to 10kHz

Filter slope from -6dB/octave to -24dB/octave

Fixed or variable volume

Or | *Analog line level stereo output (with RCA connector 1)*

Nominal level from 0,2VRMS to 4VRMS

Active filtering (low-pass, high-pass or other on demand)

Cut-off frequencies from 10Hz to 10kHz

Filter slope from -6dB/octave to -24dB/octave

Fixed or variable volume



200

RCA Connectors 3 & 4 (selectable through the configurator)

| *Analog line level input*

Nominal level from 0,2VRMS to 4VRMS

Sampling rate 96kHz or 192kHz

Or | *Advanced analog phono input*

Cartridge type: MM / MC

Canal choice: stereo / mono

Sensitivity with MM cartridge from 1mVRMS to 15mVRMS

Sensitivity with MC cartridge from 100aVRMS to 5000aVRMS

Input impedance from 10y to 16,7ky

Capacity from 0pF to 700pF

RIAA equalization curve: 1953, 1976 or other on demand

Sampling rate 96kHz or 192kHz

Or | *2 digital coaxial inputs S/PDIF*

RCA Connectors 5 & 6 (selectable through the configurator)

| *Advanced analog phono input*

Cartridge type: MM / MC

Canal choice: stereo / mono

Sensitivity with MM cartridge from 1mVRMS to 15mVRMS

Sensitivity with MC cartridge from 100µVRMS to 5000µVRMS

Input impedance from 10Ω to 47kΩ

Capacity from 0pF to 700pF

RIAA equalization curve: 1953, 1976 or other on demand

Sampling rate 96kHz or 192kHz

Or | *Analog line level input*

Nominal level from 0,2VRMS to 4VRMS

Sampling rate 96kHz or 192kHz

Digital AES/EBU input

RS232 protocol (commands documentation available through the configurator) Trigger in/out

Speakers output (banana plugs 4mm or spades)

Maximum output 2x200W under 6Ω

Adjustable from 30W to 200W through the configurator

Compatible with any speakers from 2Ω to 8Ω



200

MEASURED PERFORMANCES

THD+N (Tonal/Harmonic Distortion) at full power: 0,001%

IMD (Intermodulation Distortion) SMTPE: 0,001%

SNR (Signal-to-Noise Ratio): 130dB unweighted

Thermal distortion: not measurable

Output impedance: <0,001Ω

Bandwidth through digital inputs at 2Ω to 8Ω load: DC–87kHz (-3dB),
DC–60kHz (-1dB), DC–30kHz (-0,1dB), same on analog inputs except 0,1Hz instead of DC

OTHER CHARACTERISTICS

Chrome-plated Aluminium chassis, milled from a single block

| *Black Chrome finish*

| *Dimensions: 383mm x 383mm x 40mm (W, D, H)*

| *Weight: 5.65Kg*

Omnidirectional Radio-Frequency remote control

| *Aluminium casing milled from a single block*

| *Black Chrome finish*

| *3 x AAA LR03 1,5V batteries*

| *Battery lifespan under normal usage: 2 years*

Universal power supply 110-120V / 220-240V - 50/60Hz

| *Auto-calibration*

| *Country-specific power cord included*

Devialet AIR software included, free iOS and Android apps

Optional Wall-mount frame

2 years warranty (3 more years of warranty from the online registering of the Devialet)!

400

TECHNOLOGY

- | Patented ADH® (Analog Digital Hybrid) amplification core
- | Switched-mode power supply 600W continuous, 3000W peak power
- | Digital Signal Processor 400 MHz 4 canals 192kHz / 40bits floating-point
- | Analog/Digital Converter for analog inputs, T.I. PCM4202 component, 192kHz / 24bits
- | Patented Digital/Analog Converter « Magic Wire », T.I. PCM1792 component, 192kHz / 24bits
- | 3-bands equalizer (cut-off frequency)
- | Volume Control
- | Oversampling of all inputs in to 192kHz / 24bits
- | Universal streamer Devialet AIR (Asynchronous Intelligent Route), compatible with any PCM format up to 192kHz / 24bits
- | Horloge unique haute précision, faible gigue
- | Patented ultra-linear Class A amplifier



400

INPUTS / OUTPUTS

Wifi board 802.11 b/g/n 2,4GHz for universal streamer Devialet AIR

Ethernet RJ45 input 10/100 Mbps for universal streamer Devialet AIR

Asynchronous USB input, XMOS component

2 optical inputs (TOS and TOS mini 3,5mm)

RCA Connector 1 (selectable through the configurator)

| *Digital coaxial input S/PDIF*

Or | *Digital coaxial output S/PDIF*

Sampling rate 48kHz, 96kHz or 192kHz

Fixed or variable volume

Or | *Analog line level stereo output (with RCA connector 2)*

Nominal level from 0,2VRMS to 4VRMS

Active filtering (low-pass, high-pass or other on demand)

Cut-off frequencies from 10Hz to 10kHz

Filter slope from -6dB/octave to -24dB/octave

Fixed or variable volume

Or | *Digital coaxial output for daisy chaining*

RCA Connector 2 (selectable through the configurator)

| *Digital coaxial inputs S/PDIF*

Or | *Analog line level mono output*

Nominal level from 0,2VRMS to 4VRMS

Active filtering (low-pass, high-pass or other on demand)

Cut-off frequencies from 10Hz to 10kHz

Filter slope from -6dB/octave to -24dB/octave

Fixed or variable volume



400

RCA Connectors 3 & 4 (selectable through the configurator)

| *Analog line level input*

Nominal level from 0,2VRMS to 4VRMS

Sampling rate 96kHz or 192kHz

| *Advanced analog phono input*

Cartridge type: MM / MC

Or *Canal choice: stereo / mono*

Sensitivity with MM cartridge from 1mVRMS to 15mVRMS

Sensitivity with MC cartridge from 100 μ VRMS to 5000 μ VRMS

Input impedance from 10 Ω to 16,7k Ω

Capacity from 0pF to 700pF

RIAA equalization curve: 1953, 1976 or other on demand

Sampling rate 96kHz or 192kHz

Or | *2 digital coaxial inputs S/PDIF*

RCA Connectors 5 & 6 (selectable through the configurator)

| *Advanced analog phono input*

Cartridge type: MM / MC

Canal choice: stereo / mono

Sensitivity with MM cartridge from 1mVRMS to 15mVRMS

Sensitivity with MC cartridge from 100 μ VRMS to 5000 μ VRMS

Input impedance from 10 Ω to 47k Ω

Capacity from 0pF to 700pF

RIAA equalization curve: 1953, 1976 or other on demand

Sampling rate 96kHz or 192kHz

Or | *Analog line level input*

Nominal level from 0,2VRMS to 4VRMS

Sampling rate 96kHz or 192kHz

RS232 protocol (commands documentation available through the configurator)

Trigger in/out

Speakers output (banana plugs 4mm or spades)

Maximum output 2x400W under 6 Ω

Adjustable from 30W to 400W through the configurator

Compatible with any speakers from 2 Ω to 8 Ω



400

MEASURED PERFORMANCES

THD+N (Tonal/Harmonic Distortion) at full power: 0,001%

IMD (Intermodulation Distortion) SMTPE: 0,00025%

SNR (Signal-to-Noise Ratio): 130dB unweighted

Thermal distortion: not measurable

Output impedance: <0,001Ω

Bandwidth through digital inputs at 2Ω to 8Ω load: DC–87kHz (-3dB),
DC–60kHz (-1dB), DC–30kHz (-0,1dB), same on analog inputs except 0,1Hz instead of DC

OTHER CHARACTERISTICS

Chrome-plated Aluminium chassis, milled from a single block

| *Black Chrome finish*

| *Dimensions: 383mm x 383mm x 40mm (W, D, H)*

| *Weight: 5.65Kg*

Omnidirectional Radio-Frequency remote control

| *Aluminium casing milled from a single block*

| *Black Chrome finish*

| *3 x AAA LR03 1,5V batteries*

| *Battery lifespan under normal usage: 2 years*

Universal power supply 110-120V / 220-240V - 50/60Hz

| *Auto-calibration*

| *Country-specific power cord included*

Devialet AIR software included, free iOS and Android apps

Optional Wall-mount frame

2 years warranty (3 more years of warranty from the online registering of the Devialet)!

800

TECHNOLOGY

- | Patented ADH® (Analog Digital Hybrid) amplification core
- | Switched-mode power supply 600W continuous, 3000W peak power
- | Digital Signal Processor 400 MHz 4 canals 192kHz / 40bits floating-point
- | Analog/Digital Converter for analog inputs, T.I. PCM4202 component, 192kHz / 24bits
- | Patented Digital/Analog Converter « Magic Wire », T.I. PCM1792 component, 192kHz / 24bits
- | 3-bands equalizer (cut-off frequency)
- | Volume Control
- | Oversampling of all inputs in to 192kHz / 24bits
- | Universal streamer Devialet AIR (Asynchronous Intelligent Route), compatible with any PCM format up to 192kHz / 24bits
- | Horloge unique haute précision, faible gigue
- | Patented ultra-linear Class A amplifier



800

INPUTS / OUTPUTS

Wifi board 802.11 b/g/n 2,4GHz for universal streamer Devialet AIR

Ethernet RJ45 input 10/100 Mbps for universal streamer Devialet AIR

Asynchronous USB input, XMOS component

2 optical inputs (TOS and TOS mini 3,5mm)

RCA Connector 1

| *Digital coaxial output for daisy chaining*

RCA Connector 2 (selectable through the configurator)

| *Digital coaxial inputs S/PDIF*

Or | *Analog line level mono output*

Nominal level from 0,2VRMS to 4VRMS

Active filtering (low-pass, high-pass or other on demand)

Cut-off frequencies from 10Hz to 10kHz

Filter slope from -6dB/octave to -24dB/octave

Fixed or variable volume



800

RCA Connectors 3 & 4 (selectable through the configurator)

| *Analog line level input*

Nominal level from 0,2VRMS to 4VRMS

Sampling rate 96kHz or 192kHz

Or | *Advanced analog phono input*

Cartridge type: MM / MC

Canal choice: stereo / mono

Sensitivity with MM cartridge from 1mVRMS to 15mVRMS

Sensitivity with MC cartridge from 100 μ VRMS to 5000 μ VRMS

Input impedance from 10 Ω to 16,7k Ω

Capacity from 0pF to 700pF

RIAA equalization curve: 1953, 1976 or other on demand

Sampling rate 96kHz or 192kHz

Or | *2 digital coaxial inputs S/PDIF*

RCA Connectors 5 & 6 (selectable through the configurator)

| *Advanced analog phono input*

Cartridge type: MM / MC

Canal choice: stereo / mono

Sensitivity with MM cartridge from 1mVRMS to 15mVRMS

Sensitivity with MC cartridge from 100 μ VRMS to 5000 μ VRMS

Input impedance from 10 Ω to 16,7k Ω

Capacity from 0pF to 700pF

RIAA equalization curve: 1953, 1976 or other on demand

Sampling rate 96kHz or 192kHz

Or | *Analog line level input*

Nominal level from 0,2VRMS to 4VRMS

Sampling rate 96kHz or 192kHz

RS232 protocol (commands documentation available through the configurator)

Trigger in/out

Speakers output (banana plugs 4mm or spades)

Maximum output 2x800W under 6 Ω

Adjustable from 30W to 800W through the configurator

Compatible with any speakers from 2 Ω to 8 Ω



800

MEASURED PERFORMANCES

THD+N (Tonal/Harmonic Distortion) at full power: 0,001%

IMD (Intermodulation Distortion) SMTPE: 0,001%

SNR (Signal-to-Noise Ratio): 130dB unweighted

Thermal distortion: not measurable

Output impedance: <0,001Ω

Bandwidth through digital inputs at 2y to 8y load: DC–87kHz (-3dB),
DC–60kHz (-1dB), DC–30kHz (-0,1dB), same on analog inputs except 0,1Hz instead of DC

OTHER CHARACTERISTICS

Chrome-plated Aluminium chassis, milled from a single block

| *Black Chrome finish*

| *Dimensions: 383mm x 383mm x 40mm (W, D, H)*

| *Weight: 5.65Kg*

Omnidirectional Radio-Frequency remote control

| *Aluminium casing milled from a single block*

| *Black Chrome finish*

| *3 x AAA LR03 1,5V batteries*

| *Battery lifespan under normal usage: 2 years*

Universal power supply 110-120V / 220-240V - 50/60Hz

| *Auto-calibration*

| *Country-specific power cord included*

Devialet AIR software included, free iOS and Android apps

Optional Wall-mount frame

2 years warranty (3 more years of warranty from the online registering of the Devialet)!